

**Anti-CTBP2 Antibody**  
**Catalog # ABO10872****Specification**

---

**Anti-CTBP2 Antibody - Product Information**

Application	WB, IHC-P, IHC-F, ICC
Primary Accession	<a href="#">P56545</a>
Host	Rabbit
Reactivity	Human, Mouse, Rat
Clonality	Polyclonal
Format	Lyophilized

**Description**

Rabbit IgG polyclonal antibody for C-terminal-binding protein 2(CTBP2) detection. Tested with WB, IHC-P, IHC-F, ICC in Human;Mouse;Rat.

**Reconstitution**

Add 0.2ml of distilled water will yield a concentration of 500ug/ml.

**Anti-CTBP2 Antibody - Additional Information**

**Gene ID** 1488

**Other Names**

C-terminal-binding protein 2, CtBP2, CTBP2

**Calculated MW**

48945 MW KDa

**Application Details**

Immunocytochemistry , 0.5-1 µg/ml, Human, -<br>Immunohistochemistry(Frozen Section), 0.5-1 µg/ml, Mouse, Rat, Human<br>Immunohistochemistry(Paraffin-embedded Section), 0.5-1 µg/ml, Human, Mouse, Rat, By Heat<br>Western blot, 0.1-0.5 µg/ml, Human, Rat, Mouse<br>

**Subcellular Localization**

Nucleus . Cell junction, synapse .

**Tissue Specificity**

Ubiquitous. Highest levels in heart, skeletal muscle, and pancreas.

**Protein Name**

C-terminal-binding protein 2(CtBP2)

**Contents**

Each vial contains 5mg BSA, 0.9mg NaCl, 0.2mg Na<sub>2</sub>HPO<sub>4</sub>, 0.05mg Thimerosal, 0.05mg NaN<sub>3</sub>.

**Immunogen**

A synthetic peptide corresponding to a sequence at the C-terminus of human CTBP2(429-445aa PNQPTKHGDNREHPNEQ), identical to the related rat and mouse sequences.

**Purification**

Immunogen affinity purified.

**Cross Reactivity**

No cross reactivity with other proteins

**Storage**

**At -20°C for one year. After reconstitution, at 4°C for one month. It can also be aliquotted and stored frozen at -20°C for a longer time. Avoid repeated freezing and thawing.**

**Anti-CTBP2 Antibody - Protein Information**

**Name** CTBP2

**Function**

Corepressor targeting diverse transcription regulators. Functions in brown adipose tissue (BAT) differentiation (By similarity).

**Cellular Location**

Nucleus. Synapse.

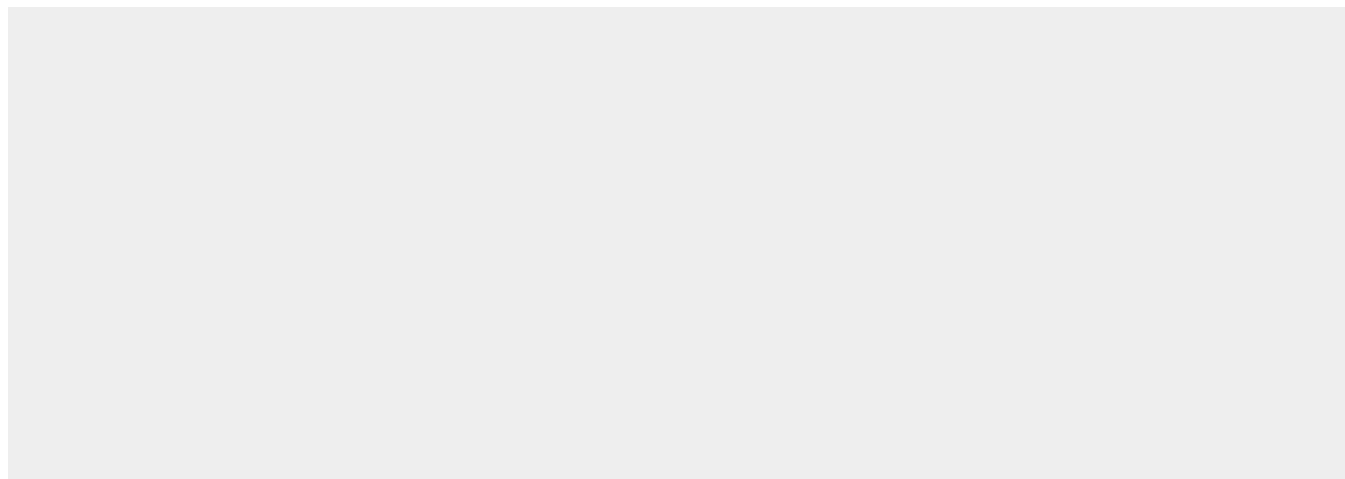
**Tissue Location**

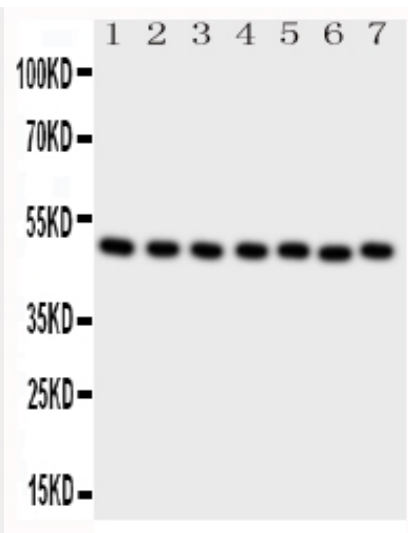
Ubiquitous. Highest levels in heart, skeletal muscle, and pancreas

**Anti-CTBP2 Antibody - Protocols**

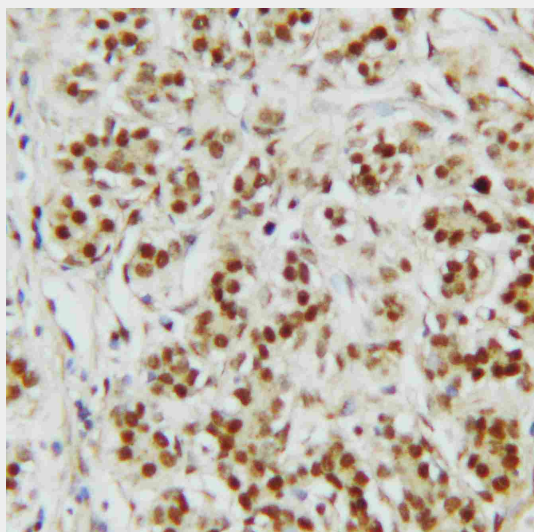
Provided below are standard protocols that you may find useful for product applications.

- [Western Blot](#)
- [Blocking Peptides](#)
- [Dot Blot](#)
- [Immunohistochemistry](#)
- [Immunofluorescence](#)
- [Immunoprecipitation](#)
- [Flow Cytometry](#)
- [Cell Culture](#)

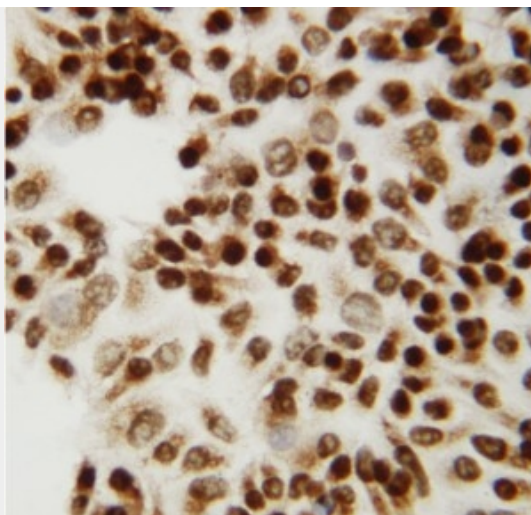
**Anti-CTBP2 Antibody - Images**



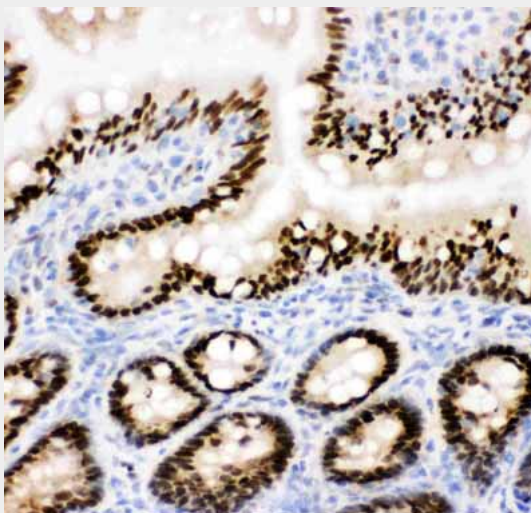
Anti-CTBP2 antibody, ABO10872, Western blotting All lanes: Anti CTBP2 (ABO10872) at 0.5ug/ml  
Lane 1: Rat Brain Tissue Lysate at 50ug  
Lane 2: Rat Spleen Tissue Lysate at 50ug  
Lane 3: HELA Whole Cell Lysate at 40ug  
Lane 4: 293T Whole Cell Lysate at 40ug  
Lane 5: COLO320 Whole Cell Lysate at 40ug  
Lane 6: U87 Whole Cell Lysate at 40ug  
Lane 7: SW620 Whole Cell Lysate at 40ug  
Predicted bind size: 49KD  
Observed bind size: 49KD



Anti-CTBP2 antibody, ABO10872, IHC(P) IHC(P): Human Mammary Cancer Tissue



Anti-CTBP2 antibody, ABO10872, ICCICC: HELA Cell



Anti-CTBP2 antibody, ABO10872, IHC(F)IHC(F): Rat Intestine Tissue

#### **Anti-CTBP2 Antibody - Background**

The E1a region of group C adenoviruses encodes 2 nearly identical proteins that are largely responsible for the oncogenic properties of adenoviruses. The CTBP1 protein binds to the C-terminal half of these E1A proteins. It's predicted that CTBP2 is a 445-amino acid protein and it is 72% identical to CTBP1. The CTBP2 gene is mapped to chromosome 10q26.13. CTBP2 is a mammalian corepressor that targets diverse transcriptional regulators. It bounds the short medial portion of delta-EF1 containing the PLDLSL motif and it enhances transrepression activity of delta-EF1.